

## **Bwindi National Park (gorilla tracking) – 3 days/2 nights**

PRE-CONFERENCE: May 29 - 31, 2020

POST-CONFERENCE: June 6 - 8, 2020

### **Day 1: FRIDAY, MAY. 29—DRIVE TO BWINDI IMPENETRABLE FOREST**

We will pick you up from your hotel in the morning to embark on your Uganda gorilla safari; you should be ready to start the drive to Bwindi Impenetrable Forest by 7:00 hrs. You will make a stopover at the Equator and for lunch in Mbarara before continuing with your drive. You will arrive in Bwindi in the evening.

Kindly note this is a long drive of not less than 9 hours.

Accommodation: Engagi Lodge / The Haven Lodge Buhoma

Meal plan: Lunch and dinner



Engagi Bedroom / Cottage

### **Day 2: SATURDAY, MAY. 30—GORILLA TREKKING DAY!**

After your breakfast at the lodge your driver guide will transfer you to the park headquarters where a game ranger will brief you at 8:00 am on the dos and don'ts of gorilla trekking. You will then be lead by the park rangers, through the gorilla trek paths in the thick Bwindi Impenetrable rain forests searching for the giant mountain Gorillas.

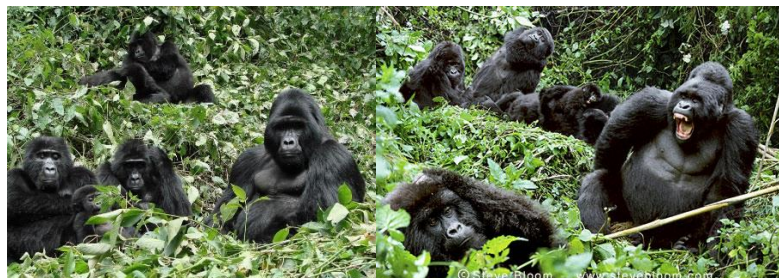
Once the mountain gorillas are found you will have 1 hour of regulated time to view these beautiful primates plus taking photographs. Take a picnic lunch and at least 2 litres of water with you.

After the gorilla trek, return to the lodge to reminisce on your Gorilla Trekking experience.

\*Optional activity if the gorilla trek ends early is the community walk costing US\$25 per person.

Accommodation: Engagi Lodge / the Haven Lodge Buhoma

Meal plan: Breakfast, Picnic lunch and Dinner





Gorillas in Bwindi

**Day 3: SUNDAY, MAY 31—RETURN TO KAMPALA**

Breakfast then drive back to Kampala or straight to Entebbe International Airport to connect with your flight out. You will have a lunch stop in Mbarara. You will arrive back in Kampala / Entebbe at approximately 18:00 hrs.

Accommodation: No accommodation

Meal plan: Breakfast and lunch

**TOUR INCLUSIONS:**

- An English speaking full-time professional guide/driver
- All park entry fees
- Accommodation as mentioned
- Meals as stated (2 Breakfasts, 2 Dinners, 3 lunches)
- Transport (in a 4 x 4 land cruiser)
- Fuel
- Government taxes
- Bottled drinking water in the vehicle

**TOUR EXCLUSIONS:**

- Accommodation facilities while in Kampala / Entebbe (big towns)
- Insurance of any kind
- 1 Gorilla permit (\$600 each)
- Any optional or extra activities not involved in the itinerary
- Visas
- International flights or local flights
- Other personal expenses like buying of crafts, cigars, souvenirs, tips, laundry