

Queen Elizabeth and Bwindi National Parks (5 Days) - 5 days/4 nights

PRE-CONFERENCE: May 27 - 31, 2020

POST-CONFERENCE: June 6 - 10, 2020

Day 1: WEDNESDAY, MAY. 27—DRIVE TO BWINDI IMPENETRABLE FOREST

We will pick you up from your hotel in the morning to embark on your Uganda gorilla safari; you should be ready to start the drive to Bwindi Impenetrable Forest by 7:00 hrs. You will make a stopover at the Equator and for lunch in Mbarara before continuing with your drive. You will arrive in Bwindi in the evening.

Kindly note this is a long drive of not less than 9 hours.

Accommodation: Engagi Lodge / The Haven Lodge Buhoma

Meal plan: Lunch and dinner



Engagi Bedroom / Cottage

Day 2: THURSDAY, MAY. 28--- GORILLA TREKKING DAY!

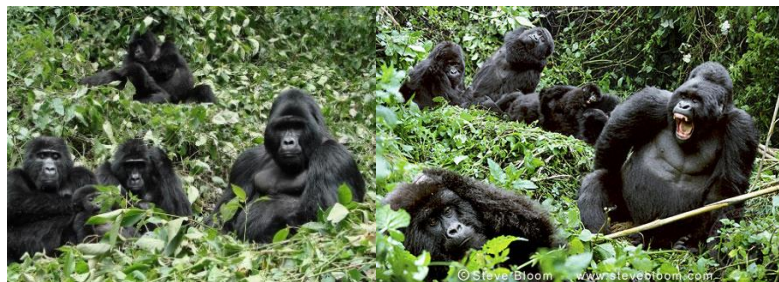
After your breakfast at the lodge your driver guide will transfer you to the park headquarters where a game ranger will brief you at 8:00 am on the dos and don'ts of gorilla trekking. You will then be lead by the park rangers, through the gorilla trek paths in the thick Bwindi Impenetrable rain forests searching for the giant mountain Gorillas.

Once the mountain gorillas are found you will have 1 hour of regulated time to view these beautiful primates plus taking photographs. Take a picnic lunch and at least 2 litres of water with you.

After the gorilla trek, return to the lodge to reminisce on your Gorilla Trekking experience.

Accommodation: Engagi Lodge / the Haven Lodge Buhoma

Meal plan: Breakfast, Picnic lunch and Dinner



Gorillas in Bwindi

Day 3: FRIDAY, MAY. 29---DRIVE TO QUEEN ELIZABETH GAME PARK

After breakfast you will drive to Queen Elizabeth National Park. Queen Elizabeth hosts a large variety of wildlife. You will game drive in Ishasha area of the park in search of the tree climbing lions, if you are lucky you may sight them. Continue to on your game drive to Mweya Lodge.

Queen Elizabeth National Park is Uganda’s second largest park, located at the base of the majestic Rwenzori Mountain range, adjacent to Lake Edward and Lake George. The park has prolific game, including Gazelle, lions, Elephants, buffalo, hippos, Uganda Kob, Warthog and Waterbuck.

You stay overnight at the beautiful Mweya Safari Lodge, located in the heart of Queen Elizabeth National Park on the Mweya peninsula. Watch wildlife from your private verandah and fall asleep to the roaring of lions on the distant savannah. This truly is Africa!

In the late evening there will be a game-drive in the park

Accommodation: Mweya Safari Lodge

Meal plan: Breakfast and lunch and dinner



Mweya Lodge

Day 4: SUTURDAY, MAY. 30---MORNING GAME / LAUNCH CRUISE

Wake up very early in the morning take a cup of coffee and go for a game drive in the Kasenyi area of Queen Elizabeth National Park where lions and most of the wildlife is concentrated. On such a game drive you will be able to see elephants, Uganda kob, buffaloes, water bucks, if lucky lions and leopards. Return to the lodge for breakfast, then another game drive.

After lunch you will have a boat cruise on the Kazinga Channel which joins Lake George and Lake Edward where you will come up close with plenty of hippos and other animals that come to drink on the shores of the lake. If time allows have another game drive before returning to the lodge.

Accommodation: Mweya Safari Lodge

Meal plan: Breakfast and lunch and dinner



Game drive/Launch cruise

Day 5: SUNDAY, MAY. 31---DEPARTURE

After breakfast you will have a final game drive on your back to Kampala / Entebbe. There will be a stopover for lunch and another opportunity of stop at the equator for some shopping may be.

Accommodation: No accommodation

Meal Plan: Breakfast and Lunch

TOUR INCLUSIONS:

- An English speaking full-time professional guide/driver
- All park entry fees
- Boat cruise on the Kazinga Channel
- Accommodation as mentioned
- Meals as stated (4 Breakfasts, 4 Dinners, 5 lunches)
- Transport (in a 4 x 4 land cruiser)
- Fuel
- Government taxes
- Bottled drinking water in the vehicle

TOUR EXCLUSIONS:

- Accommodation facilities while in Kampala / Entebbe (big towns)
- Insurance of any kind
- 1 Gorilla permit (\$600 each)
- Any optional or extra activities not involved in the itinerary
- Visas
- International flights or local flights
- Other personal expenses like buying of crafts, cigars, souvenirs, tips, laundry